

TPS65053EVM-217

Contents

1	Introduction	1
2	Setup	2
3	Board Layout	5
4	Schematic and Bill of Materials	10

List of Figures

1	Assembly Layer	5
2	Top Layer Routing	6
3	Inner Layer 2 Routing	7
4	Inner Layer 3 Top Layer Routing	8
5	Bottom Layer Routing	9
6	TPS65053EVM-217 Schematic	11

List of Tables

1	EVM Preset Output Voltage	3
2	Maximum Load Current	4
3	Factory EVM Jumper Settings	4
4	TPS65053EVM-217 Bill of Materials	12

1 Introduction

The Texas Instruments TPS65053EVM-217 evaluation module (EVM) enables designers to easily evaluate the operation and performance of the TPS65053 PMIC for applications that are powered with one Li Ion or Li Polymer cell and require multiple power rails. The TPS65053 contains two highly efficient step-down switching converters, three low dropout (LDO) linear regulators and a voltage monitor /RESET\ output.

2 Setup

This chapter describes the jumpers and connectors on the EVM, as well as how to properly connect, set up, and use the TPS65053EVM-217.

2.1 Input/Output Connector Descriptions

J1 - VLDO1

This is the positive output for the VLDO1 LDO linear regulator. This output is externally adjustable for the TPS65053 and comes preset to 1.6 V. The VLDO1 output is capable of supplying up to 400 mA.

J2 - GND

This is the return connection for the VLDO1 output rail.

J3 - VLDO2

This is the positive output for the VLDO2 LDO linear regulator. This output is externally adjustable for the TPS65053 and comes preset to 3.3 V. The VLDO2 output is capable of supplying up to 200 mA.

J4 - GND

This is the return connection for the VLDO2 output rail.

J5 - VLDO3

This is the positive output for the VLDO3 LDO linear regulator. This output is fixed for the TPS65053 at 1.3 V. The VLDO3 output is capable of supplying up to 200 mA.

J6 - GND

This is the return connection for the VLDO3 output rail.

J7 - VOUT DCDC1

This is the positive output for VDCDC1 step-down converter. This output is externally adjustable for the TPS65053 and comes preset to 2.85 V. VDCDC1 is capable of sourcing up to 1 A.

J8 - GND

This is the return connection for the VDCDC1 output rail.

J9 - VIN

This is the positive input voltage connection to the converter. The EVM operates from any supply voltage between 2.5 V and 6.0 V. The leads to the input supply should be twisted and kept as short as possible to minimize EMI transmission and input voltage droop.

J10 - GND

This is the input return connection for the input power supply.

J11 - VOUT DCDC2

This is the positive output for VDCDC2 step-down converter. This output is externally adjustable for the TPS65053 and comes preset to 1.8 V. VDCDC2 is capable of sourcing up to 600 mA.

J12 - GND

This is the return connection for the VDCDC2 output rail.

TP1 -/RESET

TP1 allows the user to monitor /RESET output. The /RESET output goes high 100 ms after the THRESHOLD input exceeds 1 V. /RESET goes low when the THRESHOLD input falls below 1 V. On the EVM, the /RESET circuitry monitors the input voltage. The threshold is set to a 3.3-V input.

JP1 - MODE Input

JP1 is used to select between the forced PWM and Power Save mode (PSM) operation for the switching converters. Place a shorting bar in the PSM position to select the Power Save mode. In this mode, PFM is used for light loads, and PWM is used for heavier loads. Place a shorting bar in the PWM position to force PWM operation at all loads.

JP2 - EN_LDO1

JP2 is used to enable the VLDO1 output. Place a shorting bar in the ON position to turn the VLDO1 LDO converter on. Place the shorting bar in the OFF position to turn the VLDO1 LDO converter off.

JP3 - EN_DCDC2

JP3 is used to enable the VDCDC2 output. Place a shorting bar in the ON position to turn the VDCDC2 step-down converter on. Place a shorting bar in the OFF position to turn VDCDC2 converter off.

JP4 - EN_DCDC1

JP4 is used to enable the VDCDC1 output. Place a shorting bar in the ON position to turn the VDCDC1 step-down converter on. Place a shorting bar in the OFF position to turn VDCDC1 converter off.

JP5 - EN_LDO2

JP5 is used to enable the VLDO2 output. Place a shorting bar in the ON position to turn the VLDO2 LDO converter on. Place the shorting bar in the OFF position to turn the VLDO2 LDO converter off.

JP6 - EN_LDO3

JP6 is used to enable the VLDO3 output. Place a shorting bar in the ON position to turn the VLDO3 LDO converter on. Place the shorting bar in the OFF position to turn the VLDO1 LDO converter off.

2.2 EVM Setup

2.2.1 EVM Factory Configuration

The EVM is configured to provide the following nominal operating conditions:

- Input Voltage: 2.5 V to 6.0 V
- Output Voltage: See [Table 1](#)
- Maximum Load Current: See [Table 2](#)

Table 1. EVM Preset Output Voltage

Output	TPS65053EVM
VDCDC1	1.85 V
VDCDC2	1.8 V
VLDO1	1.6 V
VLDO2	3.3 V
VLDO3	1.3 V

Table 2. Maximum Load Current

Output	TPS65053EVM
VDCDC1	1 A
VDCDC2	600 mA
VLD01	400 mA
VLD02	200 mA
VLD03	200 mA

2.3 Operation

1. Configure all EVM jumpers to factory settings shown in [Table 3](#).
2. Connect the input voltage return to J2.
3. Connect the positive input voltage to J1.
4. Connect all loads to the outputs.
5. Turn on input voltage.

Table 3. Factory EVM Jumper Settings

Jumper	Shunt Location
	TPS65053EVM
JP1	Between PWM and MODE
JP2	Between ON and EN_LDO1
JP3	Between ON and EN_DCDC2
JP4	Between ON and EN_DCDC1
JP5	Between ON and EN_LDO2
JP6	Between ON and EN_LDO3

3 Board Layout

This chapter provides the TPS65053EVM-217 board layout and illustrations.

3.1 Layout

Figure 1, Figure 2, and Figure 3 show the board layout for the TPS65053EVM-217 PWB.

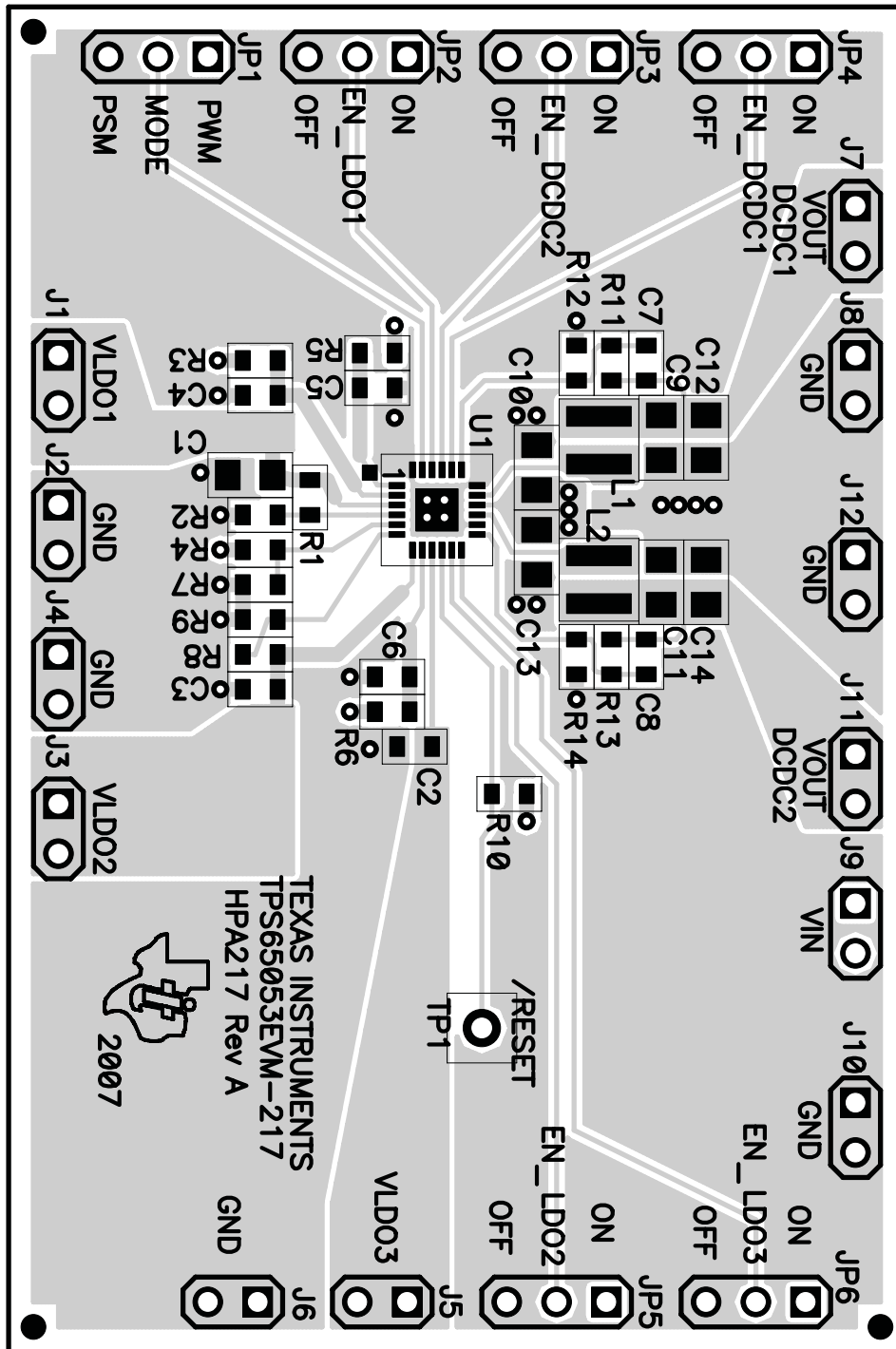


Figure 1. Assembly Layer

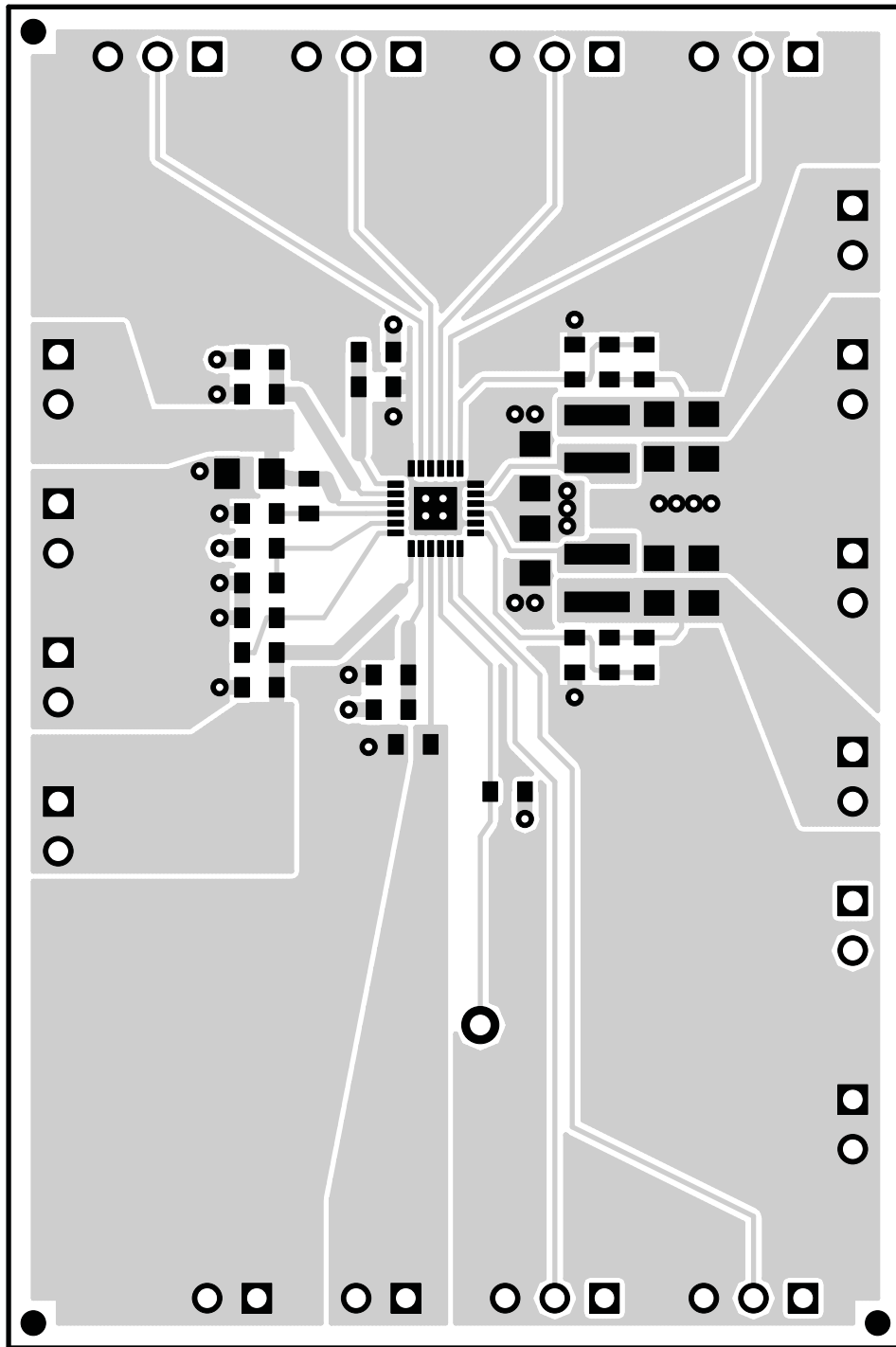


Figure 2. Top Layer Routing

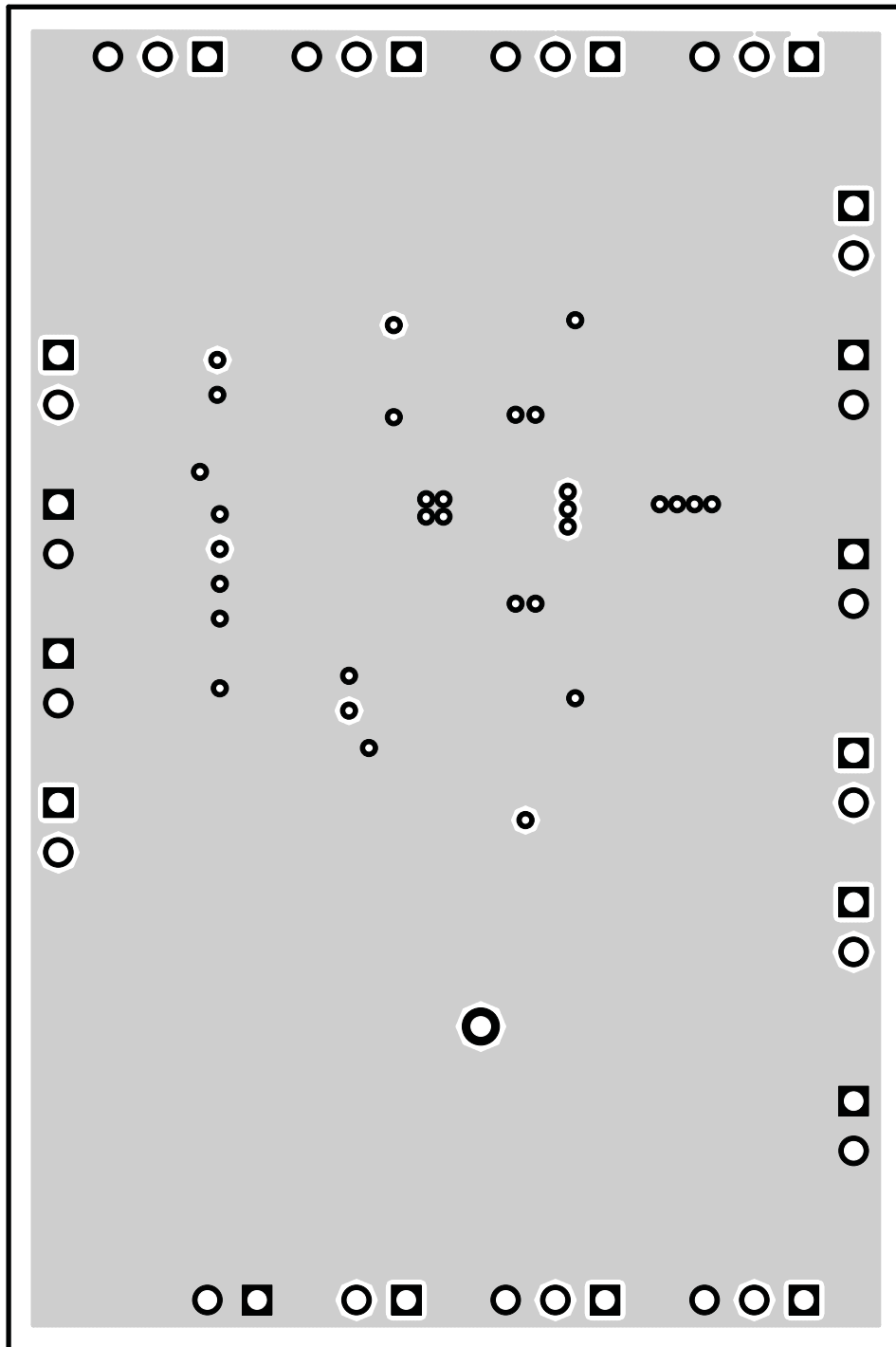


Figure 3. Inner Layer 2 Routing

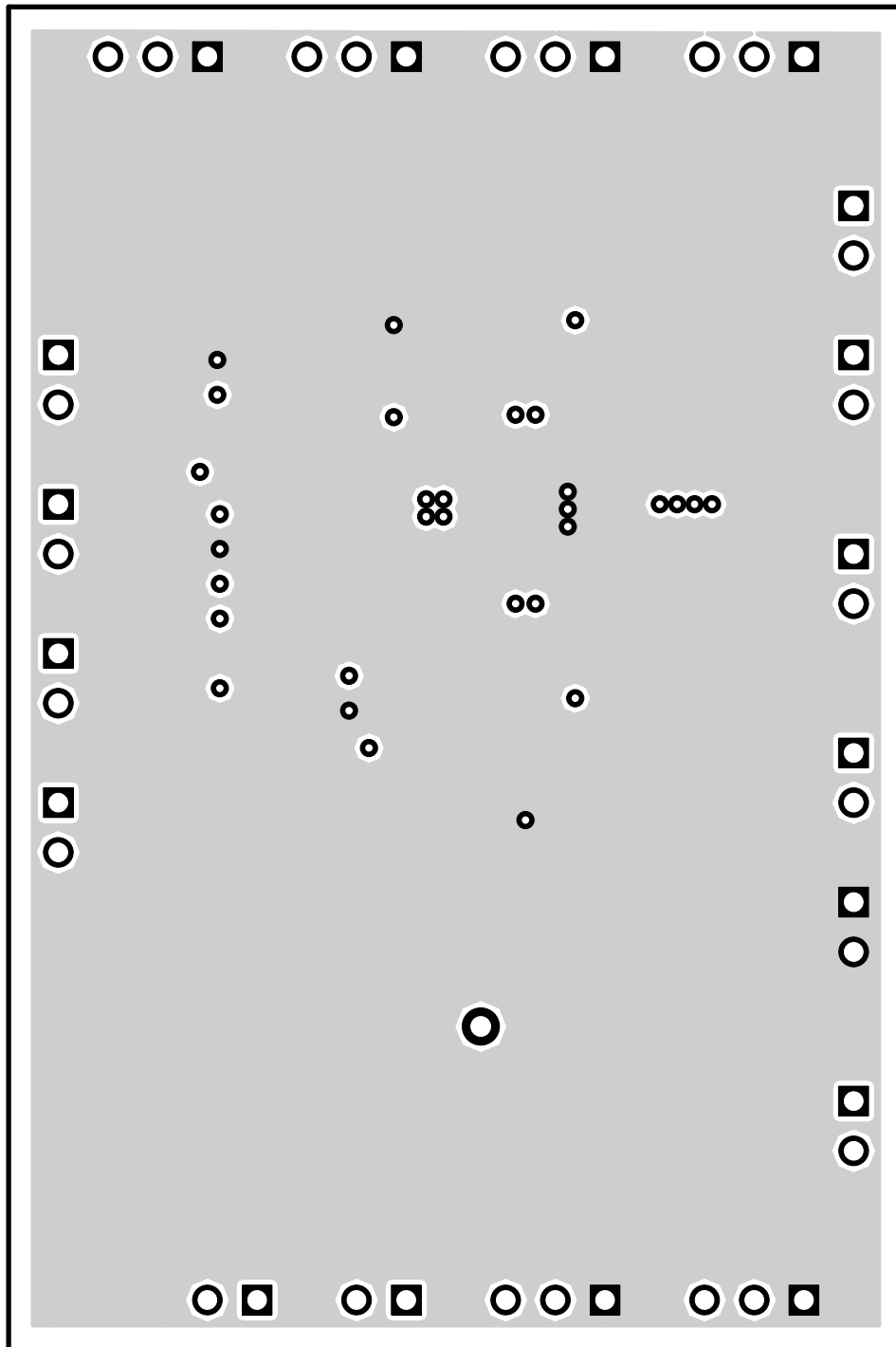


Figure 4. Inner Layer 3 Top Layer Routing

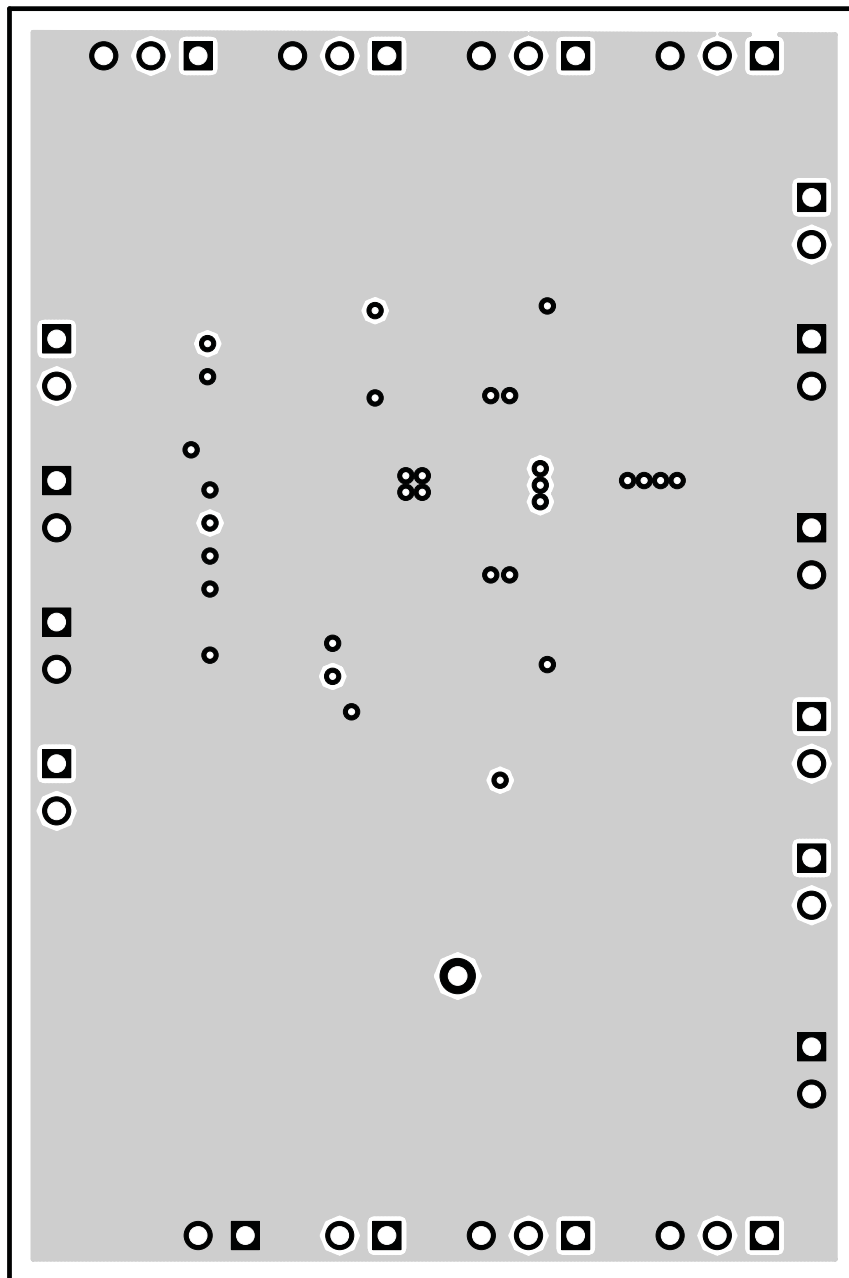


Figure 5. Bottom Layer Routing

4 Schematic and Bill of Materials

This chapter provides the TPS65053EVM-217 schematic and bill of materials.

4.1 Schematic

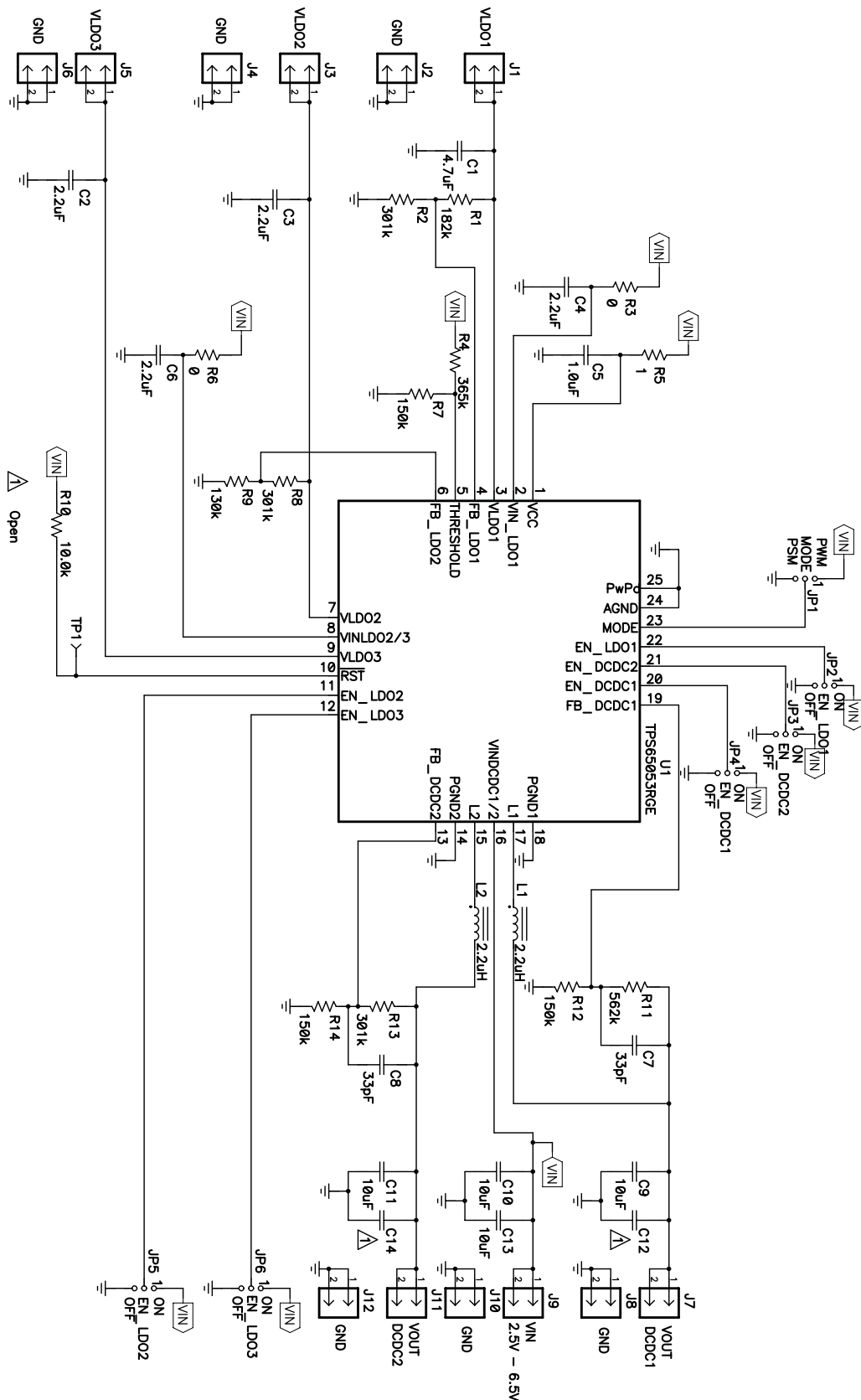


Figure 6. TPS65053EVM-217 Schematic

4.2 Bill of Materials

Table 4. TPS65053EVM-217 Bill of Materials

Count	RefDes	Value	Description	Size	Part Number	MFR
1	C1	4.7 μ F	Capacitor, Ceramic, 10V, X5R, 10%	0805	GRM219R61A475KE19D	muRata
0	C12,C14	Open	Capacitor, Ceramic	0805		
4	C2, C3, C4, C6	2.2 μ F	Capacitor, Ceramic, 10V, X5R, 10%	0603	GRM188R61A225KE34D	muRata
1	C5	1.0 μ F	Capacitor, Ceramic, 16V, X7R, 10%	0603	C1608X7R1C105K	TDK
2	C7, C8	33 pF	Capacitor, Ceramic, 50V, C0G, 5%	0603	C1608C0G1H330J	TDK
4	C9, C10, C11, C13	10 μ F	Capacitor, Ceramic, 10V, X5R, 10%	0805	GRM21BR61A106KE19L	muRata
12	J1–J12		Header, 2 pin, 100mil spacing, (36-pin strip)	0.100 \times 2	PTC36SAAN	Sullins
6	JP1–JP6		Header, 3 pin, 100mil spacing, (36-pin strip)	0.100 \times 3	PTC36SAAN	Sullins
2	L1, L2	2.2 μ H	Inductor, SMT, 1.5A, 110milliohm	0.118 \times 0.118	LPS3015-222ML	Coilcraft
1	R1	182 k	Resistor, Chip, 1/16W, 1%	0603	Std	Std
1	R10	10.0 k	Resistor, Chip, 1/16W, 1%	0603	Std	Std
1	R11	562 k	Resistor, Chip, 1/16W, 1%	0603	Std	Std
3	R2, R8, R13	301 k	Resistor, Chip, 1/16W, 1%	0603	Std	Std
2	R3, R6	0	Resistor, Chip, 1/16W, 5%	0603	Std	Std
1	R4	365 k	Resistor, Chip, 1/16W, 1%	0603	Std	Std
1	R5	1	Resistor, Chip, 1/16W, 5%	0603	Std	Std
3	R7, R12, R14	150 k	Resistor, Chip, 1/16W, 1%	0603	Std	Std
1	R9	130 k	Resistor, Chip, 1/16W, 1%	0603	Std	Std
1	TP1		Test Point, Red, Thru Hole Color Keyed	0.100 \times 0.100	5000	Keystone
1	U1		IC, 2.25 MHz Dual Step-down Converter With 3 Low Input Voltage LDOs	QFN24	TPS65053RGE	TI
1	--		PCB, 2.7 in \times 1.8 in \times 0.062 in		HPA217	Any
6	--		Shunt, 100mil, Black	0.100	929950-00	3M

Related Documentation From Texas Instruments

TPS65053 data sheet (SLVS754)

EVALUATION BOARD/KIT IMPORTANT NOTICE

Texas Instruments (TI) provides the enclosed product(s) under the following conditions:

This evaluation board/kit is intended for use for **ENGINEERING DEVELOPMENT, DEMONSTRATION, OR EVALUATION PURPOSES ONLY** and is not considered by TI to be a finished end-product fit for general consumer use. Persons handling the product(s) must have electronics training and observe good engineering practice standards. As such, the goods being provided are not intended to be complete in terms of required design-, marketing-, and/or manufacturing-related protective considerations, including product safety and environmental measures typically found in end products that incorporate such semiconductor components or circuit boards. This evaluation board/kit does not fall within the scope of the European Union directives regarding electromagnetic compatibility, restricted substances (RoHS), recycling (WEEE), FCC, CE or UL, and therefore may not meet the technical requirements of these directives or other related directives.

Should this evaluation board/kit not meet the specifications indicated in the User's Guide, the board/kit may be returned within 30 days from the date of delivery for a full refund. **THE FOREGOING WARRANTY IS THE EXCLUSIVE WARRANTY MADE BY SELLER TO BUYER AND IS IN LIEU OF ALL OTHER WARRANTIES, EXPRESSED, IMPLIED, OR STATUTORY, INCLUDING ANY WARRANTY OF MERCHANTABILITY OR FITNESS FOR ANY PARTICULAR PURPOSE.**

The user assumes all responsibility and liability for proper and safe handling of the goods. Further, the user indemnifies TI from all claims arising from the handling or use of the goods. Due to the open construction of the product, it is the user's responsibility to take any and all appropriate precautions with regard to electrostatic discharge.

EXCEPT TO THE EXTENT OF THE INDEMNITY SET FORTH ABOVE, NEITHER PARTY SHALL BE LIABLE TO THE OTHER FOR ANY INDIRECT, SPECIAL, INCIDENTAL, OR CONSEQUENTIAL DAMAGES.

TI currently deals with a variety of customers for products, and therefore our arrangement with the user **is not exclusive**.

TI assumes **no liability for applications assistance, customer product design, software performance, or infringement of patents or services described herein.**

Please read the User's Guide and, specifically, the Warnings and Restrictions notice in the User's Guide prior to handling the product. This notice contains important safety information about temperatures and voltages. For additional information on TI's environmental and/or safety programs, please contact the TI application engineer or visit www.ti.com/esh.

No license is granted under any patent right or other intellectual property right of TI covering or relating to any machine, process, or combination in which such TI products or services might be or are used.

FCC Warning

This evaluation board/kit is intended for use for **ENGINEERING DEVELOPMENT, DEMONSTRATION, OR EVALUATION PURPOSES ONLY** and is not considered by TI to be a finished end-product fit for general consumer use. It generates, uses, and can radiate radio frequency energy and has not been tested for compliance with the limits of computing devices pursuant to part 15 of FCC rules, which are designed to provide reasonable protection against radio frequency interference. Operation of this equipment in other environments may cause interference with radio communications, in which case the user at his own expense will be required to take whatever measures may be required to correct this interference.

EVM WARNINGS AND RESTRICTIONS

It is important to operate this EVM within the input voltage range of 0 V to 6 V and the output voltage range of 0.6 V to V_{INXX} .

Exceeding the specified input range may cause unexpected operation and/or irreversible damage to the EVM. If there are questions concerning the input range, please contact a TI field representative prior to connecting the input power.

Applying loads outside of the specified output range may result in unintended operation and/or possible permanent damage to the EVM. Please consult the EVM User's Guide prior to connecting any load to the EVM output. If there is uncertainty as to the load specification, please contact a TI field representative.

During normal operation, some circuit components may have case temperatures greater than 100°C. The EVM is designed to operate properly with certain components above 100°C as long as the input and output ranges are maintained. These components include but are not limited to linear regulators, switching transistors, pass transistors, and current sense resistors. These types of devices can be identified using the EVM schematic located in the EVM User's Guide. When placing measurement probes near these devices during operation, please be aware that these devices may be very warm to the touch.

Mailing Address: Texas Instruments, Post Office Box 655303, Dallas, Texas 75265
Copyright © 2007, Texas Instruments Incorporated

IMPORTANT NOTICE

Texas Instruments Incorporated and its subsidiaries (TI) reserve the right to make corrections, modifications, enhancements, improvements, and other changes to its products and services at any time and to discontinue any product or service without notice. Customers should obtain the latest relevant information before placing orders and should verify that such information is current and complete. All products are sold subject to TI's terms and conditions of sale supplied at the time of order acknowledgment.

TI warrants performance of its hardware products to the specifications applicable at the time of sale in accordance with TI's standard warranty. Testing and other quality control techniques are used to the extent TI deems necessary to support this warranty. Except where mandated by government requirements, testing of all parameters of each product is not necessarily performed.

TI assumes no liability for applications assistance or customer product design. Customers are responsible for their products and applications using TI components. To minimize the risks associated with customer products and applications, customers should provide adequate design and operating safeguards.

TI does not warrant or represent that any license, either express or implied, is granted under any TI patent right, copyright, mask work right, or other TI intellectual property right relating to any combination, machine, or process in which TI products or services are used. Information published by TI regarding third-party products or services does not constitute a license from TI to use such products or services or a warranty or endorsement thereof. Use of such information may require a license from a third party under the patents or other intellectual property of the third party, or a license from TI under the patents or other intellectual property of TI.

Reproduction of information in TI data books or data sheets is permissible only if reproduction is without alteration and is accompanied by all associated warranties, conditions, limitations, and notices. Reproduction of this information with alteration is an unfair and deceptive business practice. TI is not responsible or liable for such altered documentation.

Resale of TI products or services with statements different from or beyond the parameters stated by TI for that product or service voids all express and any implied warranties for the associated TI product or service and is an unfair and deceptive business practice. TI is not responsible or liable for any such statements.

TI products are not authorized for use in safety-critical applications (such as life support) where a failure of the TI product would reasonably be expected to cause severe personal injury or death, unless officers of the parties have executed an agreement specifically governing such use. Buyers represent that they have all necessary expertise in the safety and regulatory ramifications of their applications, and acknowledge and agree that they are solely responsible for all legal, regulatory and safety-related requirements concerning their products and any use of TI products in such safety-critical applications, notwithstanding any applications-related information or support that may be provided by TI. Further, Buyers must fully indemnify TI and its representatives against any damages arising out of the use of TI products in such safety-critical applications.

TI products are neither designed nor intended for use in military/aerospace applications or environments unless the TI products are specifically designated by TI as military-grade or "enhanced plastic." Only products designated by TI as military-grade meet military specifications. Buyers acknowledge and agree that any such use of TI products which TI has not designated as military-grade is solely at the Buyer's risk, and that they are solely responsible for compliance with all legal and regulatory requirements in connection with such use.

TI products are neither designed nor intended for use in automotive applications or environments unless the specific TI products are designated by TI as compliant with ISO/TS 16949 requirements. Buyers acknowledge and agree that, if they use any non-designated products in automotive applications, TI will not be responsible for any failure to meet such requirements.

Following are URLs where you can obtain information on other Texas Instruments products and application solutions:

Products		Applications	
Amplifiers	amplifier.ti.com	Audio	www.ti.com/audio
Data Converters	dataconverter.ti.com	Automotive	www.ti.com/automotive
DSP	dsp.ti.com	Broadband	www.ti.com/broadband
Interface	interface.ti.com	Digital Control	www.ti.com/digitalcontrol
Logic	logic.ti.com	Military	www.ti.com/military
Power Mgmt	power.ti.com	Optical Networking	www.ti.com/opticalnetwork
Microcontrollers	microcontroller.ti.com	Security	www.ti.com/security
RFID	www.ti-rfid.com	Telephony	www.ti.com/telephony
Low Power Wireless	www.ti.com/lpw	Video & Imaging	www.ti.com/video
		Wireless	www.ti.com/wireless

Mailing Address: Texas Instruments, Post Office Box 655303, Dallas, Texas 75265
Copyright © 2007, Texas Instruments Incorporated